

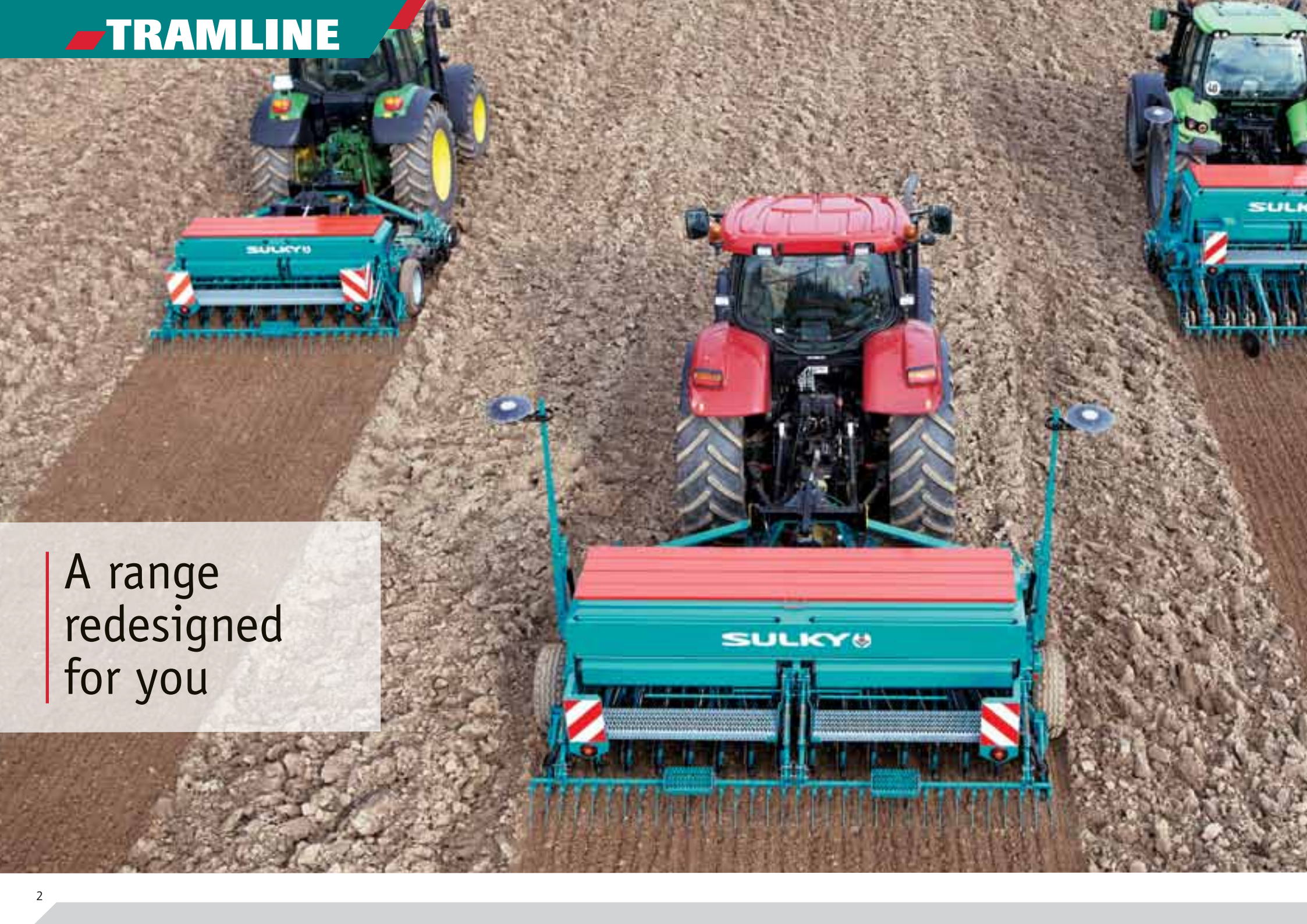
TRAMLINE

SULKY

>12/2016-GB
406045-10



A range
redesigned
for you



*A new generation
for...*

- *Greater performance*
- *Greater comfort*
- *Greater safety*



**“ Certain developments sometimes
make all the difference ”**

Contents

- TRAMLINE SE-SX: simply essential 4/5
- TRAMLINE CE-CX: It will always do more for you! 6/7
- UNISOCS: the clearance you were waiting for! 8/9
- UNIDISC/coulter: incredibly efficient 10/11
- “Row by Row” S-Plus application: extreme accuracy 12/13
- Your requirements make our equipment 14/15
- Features..... 16

| TRAMLIN SE - SX: simply essential



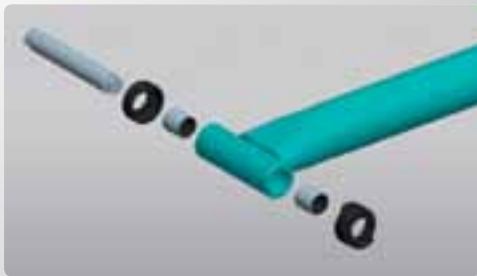
SE-SX

2-BEAM SUPPORTING FRAME: THE ROBUST SOLUTION



- ⊕ Maximum reliability
- ⊕ Adapted to high working speeds
- ⊕ Adapted to the load when travelling on roads

STRENGTHENED COULTER UNIT ARTICULATIONS FOR:



- Excellent passage over stony ground
- Guaranteed long service life



INCREASE THE COMBINATIONS WHEN WORKING:

- Seed drill hitched alone behind the tractor
- Combined with a soil preparation implement



SIMPLE, SAFE CALIBRATION TEST:

- ⊕ No turning of the wheels
- ⊕ Large graduated scale for extremely accurate adjustment of the application rate
- ⊕ No risk as the drill is always placed on the ground

TWO-WHEEL DRIVE = RATE ACCURACY:

- In all conditions of grip
- When there is a ploughed furrow



CAPACITY UP TO 1,000 L ONBOARD THE 3 M VERSION:

- ⊕ Fewer loadings required
- ⊕ Optimisation of the time consecrated to drilling

| TRAMLIN CE - CX: It will always do more for you!



CE - CX

**TOP HYDRAULIC LINK:
THE ASSET IN THE HEADLANDS**



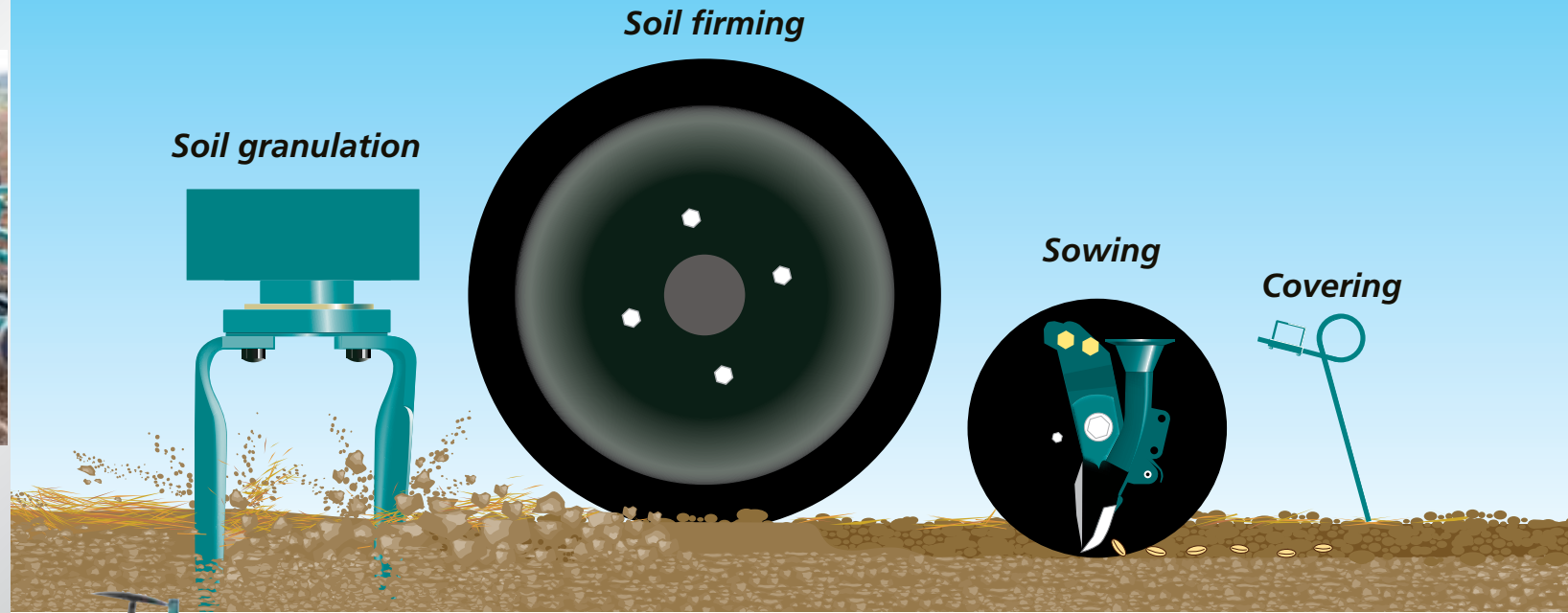
- ⊕ Drilling bar cleared during manoeuvres
- ⊕ PTO shaft under less stress
- ⊕ Managed from the cab by a single hydraulic spool valve

**LARGE DIAMETER
DRIVE WHEEL:**



- ⊕ Very good grip
- ⊕ Unaffected by weather conditions

“ An integrated seed drill - a proven concept ”



**SULKY CE/CX pack
seed drill + rotary harrow:**

- ⊕ Ultra-easy integration (packer roller)
- ⊕ No restrictive adaptation
- ⊕ Perfect work

| UNISOCS: the clearance you were waiting for!



EVEN STRONGER REAR HARROWS FOR TOTAL COVERING:

- *at high speed*
- *in clumpy conditions*
- *in sticky soils*

UNISOCS:

widely spaced rows
+
high under-beam height
=
MAXIMUM CLEARANCE



- + Passage through residues
- + Better working capacity in damp conditions
- + Accurate drilling in stony soils



“Finally, Suffolk coulters for extremely varied conditions!”

THE DETAILS WHICH MAKE THE DIFFERENCE:



Stainless steel spreading coulters
Band sowing,
ideal for your pastures



Depth limiter
For light, even soils



Press wheel
Excellent soil/seed contact

| UNIDISC/coulter: incredibly efficient



UNIDISC/COULTER: SIMPLY TIRELESS



- ⊕ Hardened steel disc
FORGES DE NIAUX
- ⊕ Double-row
ball bearings
- ⊕ Zero maintenance

EVEN STRONGER REAR HARROWS FOR TOTAL COVERING:



- at high speed
- in clumpy conditions
- in sticky soils

“ ALL TERRAIN drilling element with perfect seed placement ”



«Double-effect» giving depth adjustment almost to the cm

- 1 For deep sowing: descent of the element proportional to the pressurisation of the spring
- 2 For surface sowing: forced lifting of the element by progressive decompression of the spring

Press wheel, much more than an accessory

- ⊕ Excellent contact soil / seed
- ⊕ Fast and consistent crops emergence

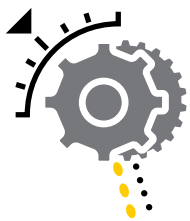
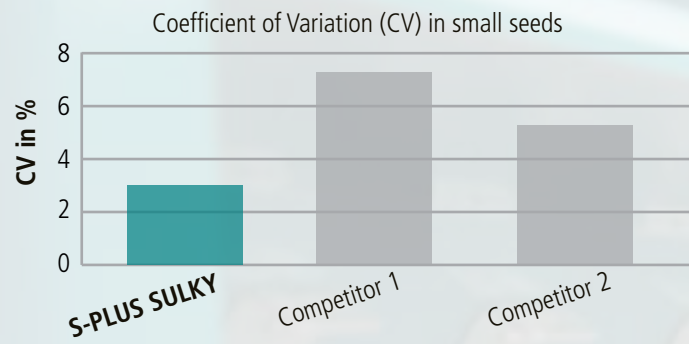


UNIDISC/Coulter: the ALL TERRAIN solution

The disc opens the furrow and the coulter cleans the drilling bar

- ⊕ In all conditions, accompaniment of the seeds right to the bottom of the furrow
- ⊕ In straw conditions, excellent germination rate
- ⊕ In damp conditions, unmatched passage due to a disc that has been cleaned

PROVEN ACCURACY!



S-PLUS

RECONSIDERED DISTRIBUTION FOR:

- Greater comfort
- Greater accuracy
- Greater performance

“Row by Row” application extreme accuracy



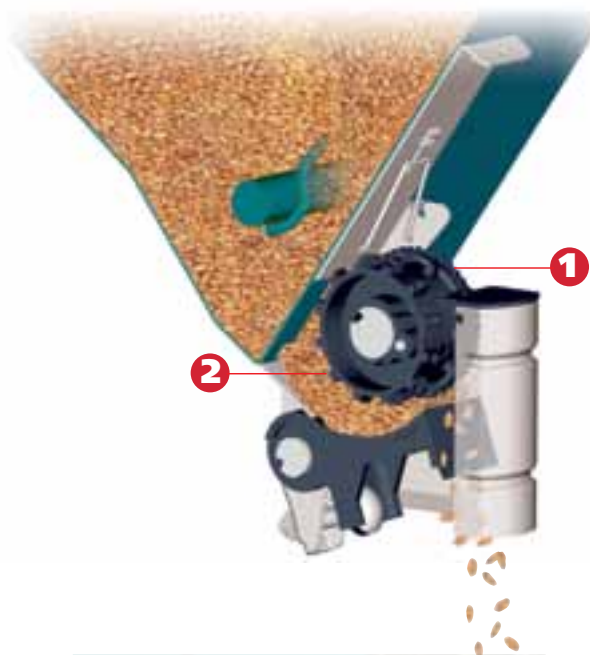
S-PLUS

1. FINELY PEG WHEEL FOR SMALL SEEDS:

- ⊕ Formidable accuracy for rape
- ⊕ No alteration to the seed

2. PEG WHEEL FOR MEDIUM AND LARGE SEEDS:

- ⊕ Guarantees high application rates
- ⊕ Preserves the most fragile seeds



Variator with large graduated scale for adjustment of the application rate almost to the kg:

- ⊕ Greater readability
- ⊕ Greater accuracy



Hopper bottom with distribution cells giving ZERO «dead» volume, slow rotation agitator and retractable anti-compaction deflector **giving a regular application rate whatever the load in the hopper**



Standard disengaging half-drill to optimise your treatment and fertilisation passages.

Choose your control box:



Functions	Medion 2	Ultron	Ultron MS
Tramlining + STOP key (stop tramlining)	●	●	●
Surface area (partial and total) meters	●	●	●
Forward speed	●	●	●
Distribution mechanism rotation alarm		●	●
Hopper empty alarm		●	●
On-screen display of application rate/hectare			●
Calibration test assistance			●
Rate modulation (10% steps)			●

| Your requirements make our equipment



Levelling tine harrow with ergonomic adjustment handles and strengthened articulations



Lighting and signalling (optional)



Disc pre-emergence markers (optional)



Indicators for hopper seed level, vertical position and tramlining



MS drilling rate modulation (optional)



Hydraulic modulation of depth (optional)



Hectare counter (optional)



Electric marking control with passage indicator (optional)

SE/SX MODELS



4-tine tractor wheel track eradicator (optional)



2-tine drill wheel track eradicator with Non-Stop safety device (optional)



Tramlining without marker counter (optional) and swinging drawbar (optional)



Drill wheel scrapers

CE / CX MODELS



Triangle linkage on tools from other brands



Top hydraulic link (optional)



Attachment of sensors for counting tramlining without markers



Packer roller on Sulky CULTILINE power harrow

Features

Type	TRAMLINE SE		TRAMLINE SX				TRAMLINE CE		TRAMLINE CX			
Working width	3,00 m		3,00 m		4,00 m		3,00 m		3,00 m		4,00 m	
Hopper capacity (litres)	450 / 700*		800 / 1000*		1 100 / 1 350*		550 / 800*		800 / 1 000*		1 100 / 1 350*	
Hopper dimensions (cm)	48 x 225		64 x 225		64 x 325		48 x 225		64 x 225		64 x 325	
Spacing inter row (cm)	14,2	12	14,2	12	13,7	12	15	12,5	15	12,5	14,3	12,5
Number of rows	21	25	21	25	29	33	20	24	20	24	28	32
Weight (indicative)	550 kg**		600 kg**		850 kg**		650 kg**		700 kg**		900 kg**	

* With hopper extension ** In suffok coulter version, depending on accessories

“ Enjoy or extend the experience ”

SULKY

The drilling and spreading specialists

Les Portes de Bretagne - P.A. de la Gaultière
35220 CHATEAUBOURG France
Tel: (33) 02 99 00 84 84 • Fax: (33) 02 99 62 39 38
E-Mail: info@sulky-burel.com

Postal address :
SULKY-BUREL – CS 20005, 35538 NOYAL SUR VILAINE CEDEX, France

www.sulky-burel.com

